

TECHNICAL SPECIFICATION

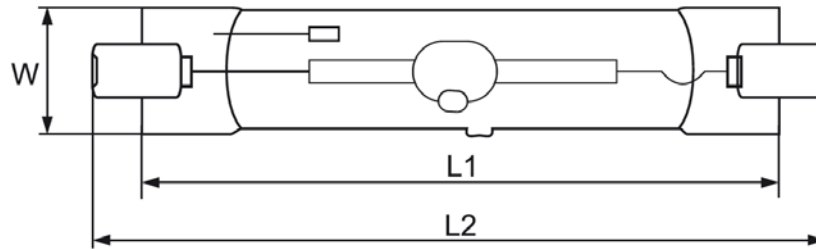
Metal Halide Lamps Rx7s



Technical data

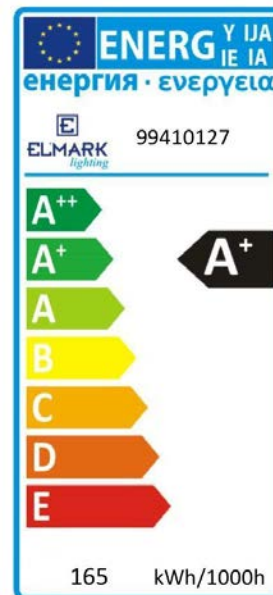
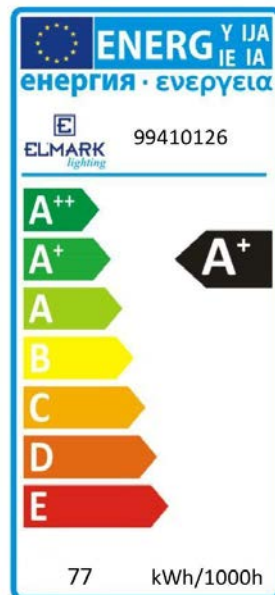
- Power supply: Control gear
- Power: 70W; 150W
- Colour rendering index: Ra≥82
- Colour temperature: 4200K
 - Rated LLMF at 2,000h: 0.92
 - Rated LLMF at 4,000h: 0.90
 - Rated LLMF at 6,000h: 0.85
 - Rated LLMF at 8,000h: 0.78
 - Rated LLMF at 10,000h: 0.73
- Base (standard designation): Rx7s
- Average lifetime: 10000h
 - Rated lamp survival factor at 2,000h: 0.95
 - Rated lamp survival factor at 4,000h: 0.90
 - Rated lamp survival factor at 6,000h: 0.85
 - Rated lamp survival factor at 8,000h: 0.80
 - Rated lamp survival factor at 10,000h: 0.60
- Lamp mercury content: max. 10.6mg / 12.3mg
- Dimmable: No

Variants and dimensions



Watt	Lumens (lm)	Colour temp. (K)	Current (A)	Nominal voltage (V)	Ignition Voltage (kV)	Cp μ F	Colour	Size (mm)			Catalogue number	Packing (pcs)
								L1	L2	W		
70W	5600	4200	0.95	93	3.6 ÷ 5	12	clear	104	117	20	99410126	20
150W	12000	4200	1.80	95	3.6 ÷ 5	25	clear	121	134	24	99410127	20

Energy efficiency



Barcodes

Barcode	Catalogue number
3800131163868	99410126
3800131163875	99410127

Standards

EN55015

EN61547

EN61167

EN62035

EN62321

